



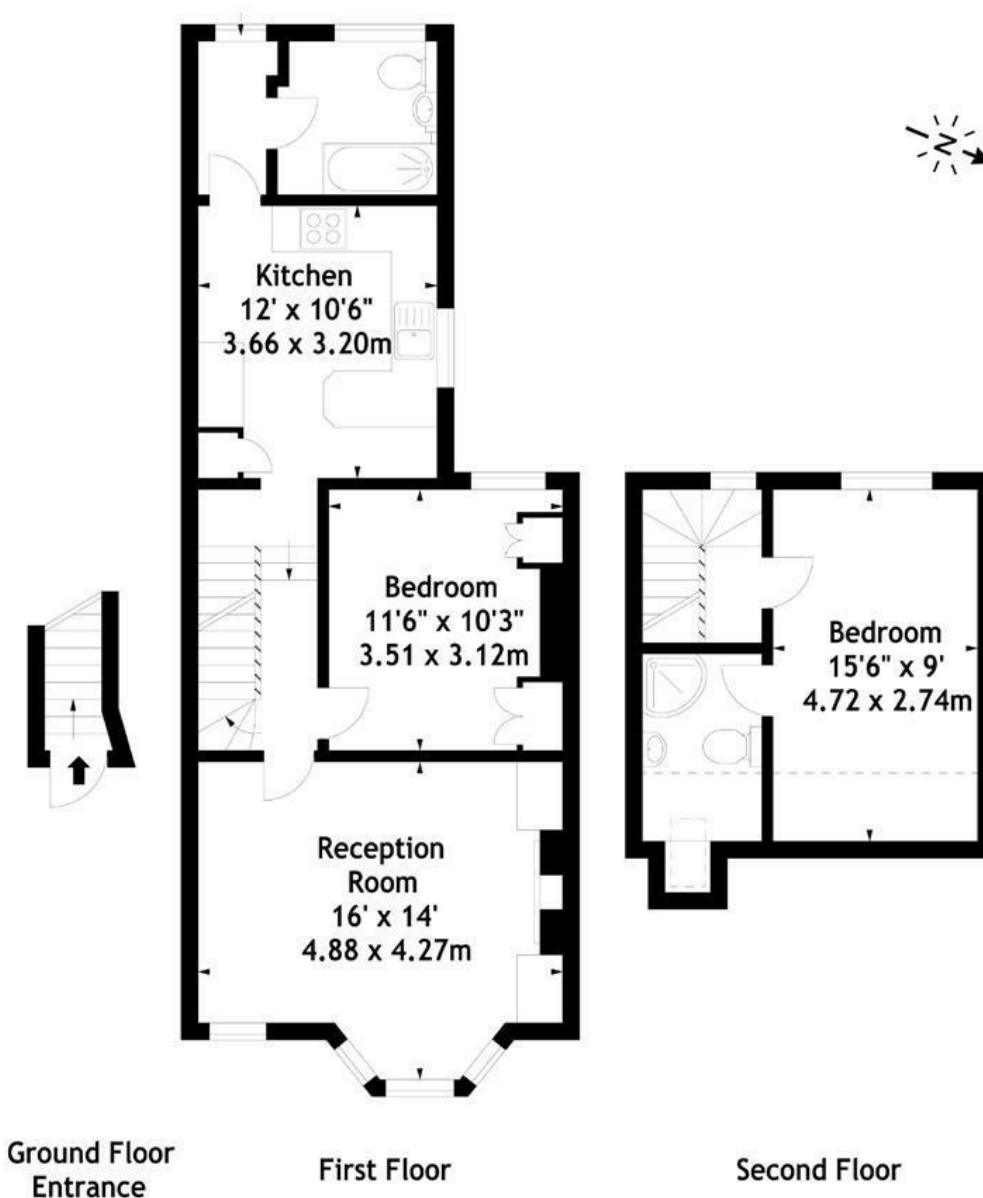
## Eastbury Grove, W4 2JT

To be freshly painted.. A very nicely present split-level maisonette situated in this very popular residential area, just a short walk from Chiswick High Road. The property comprises two double bedrooms and en suite shower room and a further bathroom. Lovely open living room with bay window, nice size kitchen with breakfast bar and seating. Local transport links include Turnham Green Terrace tube station, numerous local bus routes, and easy access to A4/M4 central London and Heathrow. Hounslow Council Tax Band D. EPC D. Part furnished. Available 24th October

- Lovely central Chiswick location
- Great for transport links
- Period split level maisonette
- Large reception room
- Open kitchen with breakfast bar
- Two double bedrooms
- Main bathroom
- Further En-suite shower room
- Offered part furnished
- Available 24th October

**£2,350 Per Calendar Month**

Eastbury Grove,  
Chiswick, W4  
Approx. Gross Internal Area  
846 Sq Ft - 78.59 Sq M



Measured in accordance with RICS guidelines. Every attempt is made to ensure accuracy, however all measurements are approximate. This floor plan is for illustrative purposes only and is not to scale.

© Datography Ltd 2017  
Photographs \* Floorplans \* Virtual Tours  
Tel: 0845 643 4401 www.datography.com



Energy Efficiency Rating		
	Current	Potential
Very energy efficient - lower running costs		
(92 plus) A		
(81-91) B		
(69-80) C		
(55-68) D		
(39-54) E		
(21-38) F		
(1-20) G		
Not energy efficient - higher running costs		
England & Wales	EU Directive 2002/91/EC	75

Environmental Impact (CO <sub>2</sub> ) Rating		
	Current	Potential
Very environmentally friendly - lower CO <sub>2</sub> emissions		
(92 plus) A		
(81-91) B		
(69-80) C		
(55-68) D		
(39-54) E		
(21-38) F		
(1-20) G		
Not environmentally friendly - higher CO <sub>2</sub> emissions		
England & Wales	EU Directive 2002/91/EC	

5-7 Turnham Green Terrace, Chiswick, London, W4 1RG

Tel 020 8747 3800

E-mail [lettings@whitmanandco.com](mailto:lettings@whitmanandco.com)

Website [www.whitmanandco.com](http://www.whitmanandco.com)



MISREPRESENTATION ACT 1967

Whitman & Co. for themselves and for the vendors give notice that these particulars do not constitute any part of, an offer of contract. All statements contained in these particulars are made without responsibility on the part of Whitman & Co. or the vendor. None of the statements contained in these particulars is to be relied upon as statements or representations of facts. Any intending purchaser must satisfy himself by inspection or otherwise as to the correctness of each of the statements contained in these particulars. The vendor does not make or give, and neither Whitman & Co. or any person in their employment has any authority to make or give, any representation or warranty whatever in relation to the property.